



Implementation Science
Coordination, Consultation,
& Collaboration Initiative

Leveraging Implementation Science to End the HIV Epidemic

January 25th, 2021

Objectives of the Webinar:

Describe the role of NIH and ISC3I in the EHE initiative

Identify the HIV IS Consultation Hubs and their areas of expertise

Describe the landscape of current EHE CFAR/ARC supplement projects

Agenda:

History of ISWG/ISC3I activities (15min)

Y1 Findings and Y2 Overview (10 min)

Introductions of IS Hubs (25 min)

Q & A (10 min)



Implementation Science
Coordination, Consultation,
& Collaboration Initiative

History of inter-CFAR implementation science working group

Established in 2018 through CFAR supplement to Third Coast (Mustanski and Benbow) and Johns Hopkins (Baral) CFARs to host working on HIV implementation science.

Goals and objectives identified through interviews and surveys of CFAR leaders, calls with planning group (now steering committee), and 3 in person meetings.

Steering committee comprised of 23 members from 9 CFARs, 3 federal agencies (5 NIH ICs, CDC, USAID), and 1 foundation (AmFar). **Executive Committee:** Benbow, Mustanski, Baral (Co-Chairs); Geng, Sherr, Smith (members).

Initially **funded** through CFAR meeting supplement with ongoing administrative support provided by TC CFAR. Continuing with support of **ISC³I** supplement (TC CFAR) and **training** supplement (JHU).



CFAR Implementation Science Working Group

Purpose and Mission

1. Advance **training** in HIV implementation science (training institute).
2. Create and disseminate **tools** to support implementation science at CFARs (website with articles, talks, slide deck).
3. **Convene** HIV implementation science researchers, research and services funders, and implementation partners (e.g., health departments, large health systems) to exchange knowledge about new scientific developments, identify gaps and opportunities, forge collaborations, and help train new investigators (workshop, conference).
4. Explore **infrastructure** that could support nimble, cost-effective, and high impact HIV implementation science.





Brian Mustanski
Co-Director



Implementation Science
Coordination, Consultation,
& Collaboration Initiative



Nanette Benbow
Co-Director



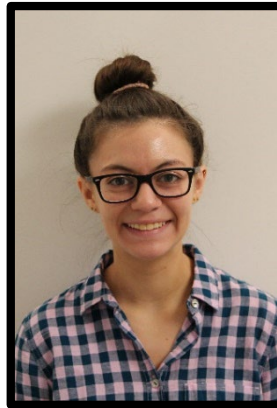
C Hendricks Brown



Jasmine Deskins



Brennan Keiser



Melissa Mongrella



Dennis H. Li



Kasim Ortiz



JD Smith



Juan Villamar

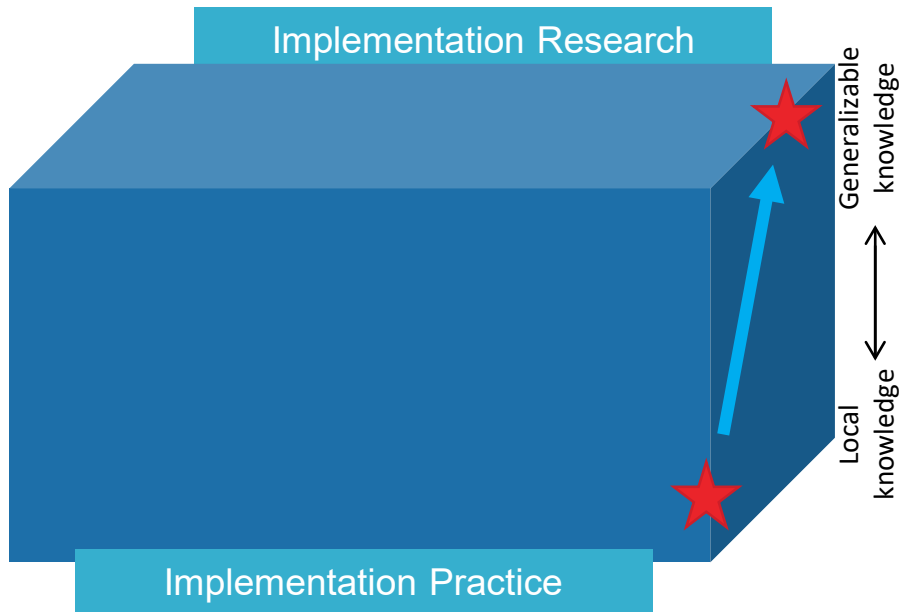




Implementation Science
Coordination, Consultation,
& Collaboration Initiative

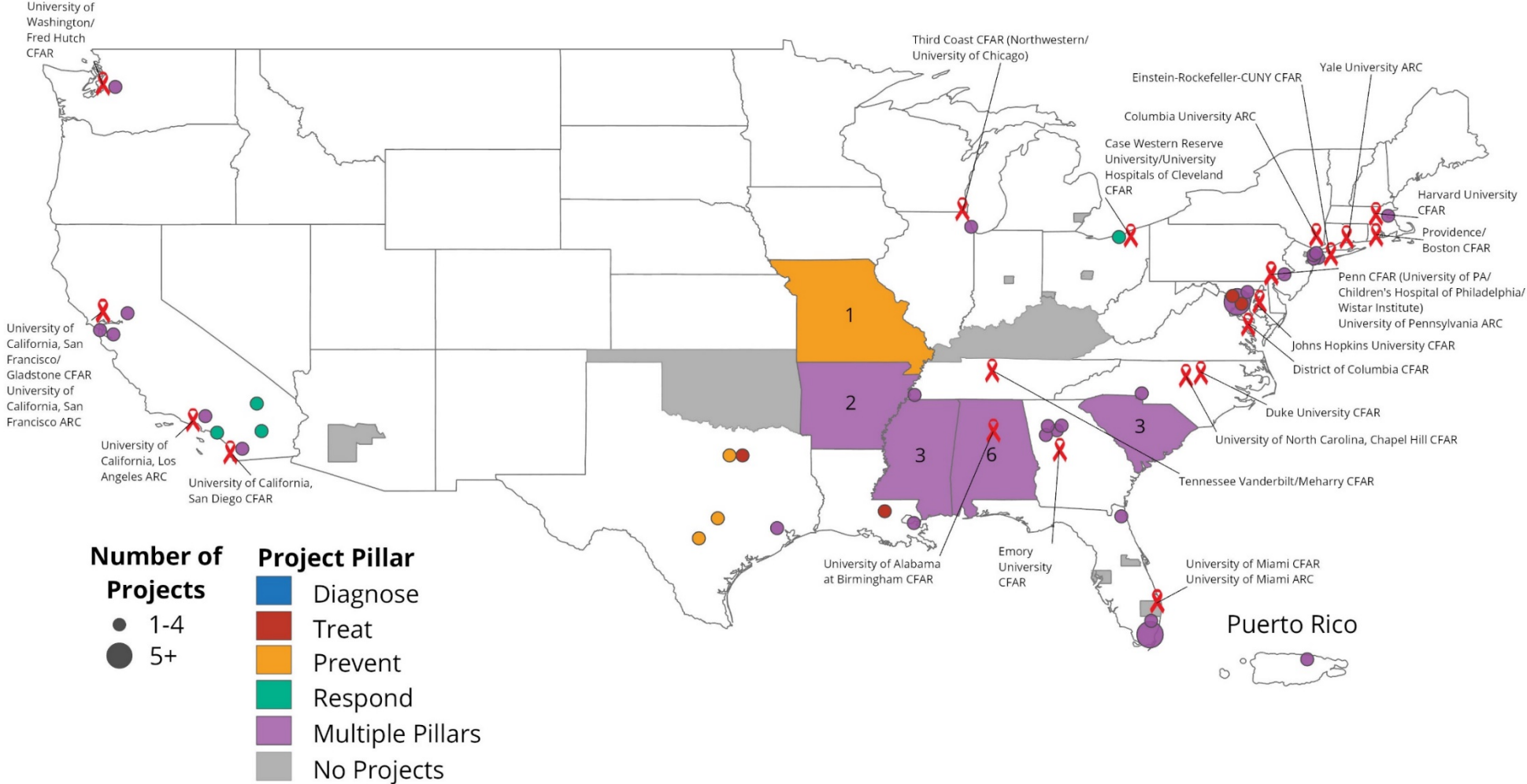
Overarching Goals

1. **Support high-quality implementation science** in funded *Ending the HIV Epidemic* projects by providing technical assistance from experts on IS designs, frameworks, strategies, measures, and outcomes.
2. **Create opportunities to develop generalizable knowledge from local knowledge** by encouraging the use of shared frameworks and harmonized measures, synthesizing data across projects, and encouraging cross-project collaboration.



Implementation Science
Coordination, Consultation,
& Collaboration Initiative

65 Planning Projects in EHE Year 1



ISC³I Summit



- Kickoff for both ISC³I and EHE
- Two days in Chicago, IL
- 173 attendees, including
 - 63/65 projects
 - Federal partners from 6 agencies
- Objectives:
 - Introduce IS concepts and provide examples from HIV
 - Facilitate co-development of an implementation research logic model
 - Foster cross-project dialogue

WELCOME TO THE ISC3I COMMUNITY OF PRACTICE



UPCOMING EVENTS:

Stay tuned for future events!

The full virtual group meeting schedule and link to the meeting room can be accessed on the [Our Community](#) page.



CFAR Implementation Science Resources

THIRD COAST CENTER FOR
Implementation Science
 An Introductory Training
 Overview of Experimental Design

ADDITIONAL RESOURCES

- Intro to D&I Science
- Bauer, M. S., Damschroder, L., Hagedorn, H., Smith, J. L., & Kilbourne, A. M. (2019). Science for the non-specialist. *BMC Psychology*, 3(32). doi:10.1186/s40359-019-0154-4
- Bauer, M. S., & Kirchner, J. (2019). Implementation science: What is it and why should we care? *Psychology of Women Quarterly*, 43(1), 1-11. doi:https://doi.org/10.1016/j.pwq.2019.04.025
- Colditz, G., & Emmons, K. (2018). The Promise and Challenges of Dissemination and Implementation Science. In G. A. Colditz, & E. K. Proctor (Eds.), *Dissemination and Implementation Science to Practice*, Second Edition. New York: Oxford University Press.
- Proctor, E., H. Silmere, R., Raghavan, P., Hovmand, G., Aarons, A., Bunger, R., Griffioen, C., & Mendenhall, S. (2011). Implementation research: conceptual distinctions, measurement challenges, and Policy in *Mental Health and Mental Health Services Research*, 38(2), 65-76. doi:10.1007/s11265-011-9422-9
- Rabin, B. A., & Brownson, R. C. (2018). Terminology for Dissemination and Implementation Science. In G. A. Colditz, & E. K. Proctor (Eds.), *Dissemination and Implementation Science to Practice*, Second Edition. New York: Oxford University Press.

[Partnerships in D&I](#)
[D&I Grant Writing](#)

IMPLEMENTATION SCIENCE RESOURCES

Check back frequently for updates!

INTRO TO IMPLEMENTATION SCIENCE IN HIV IMPLEMENTATION SCIENCE 101

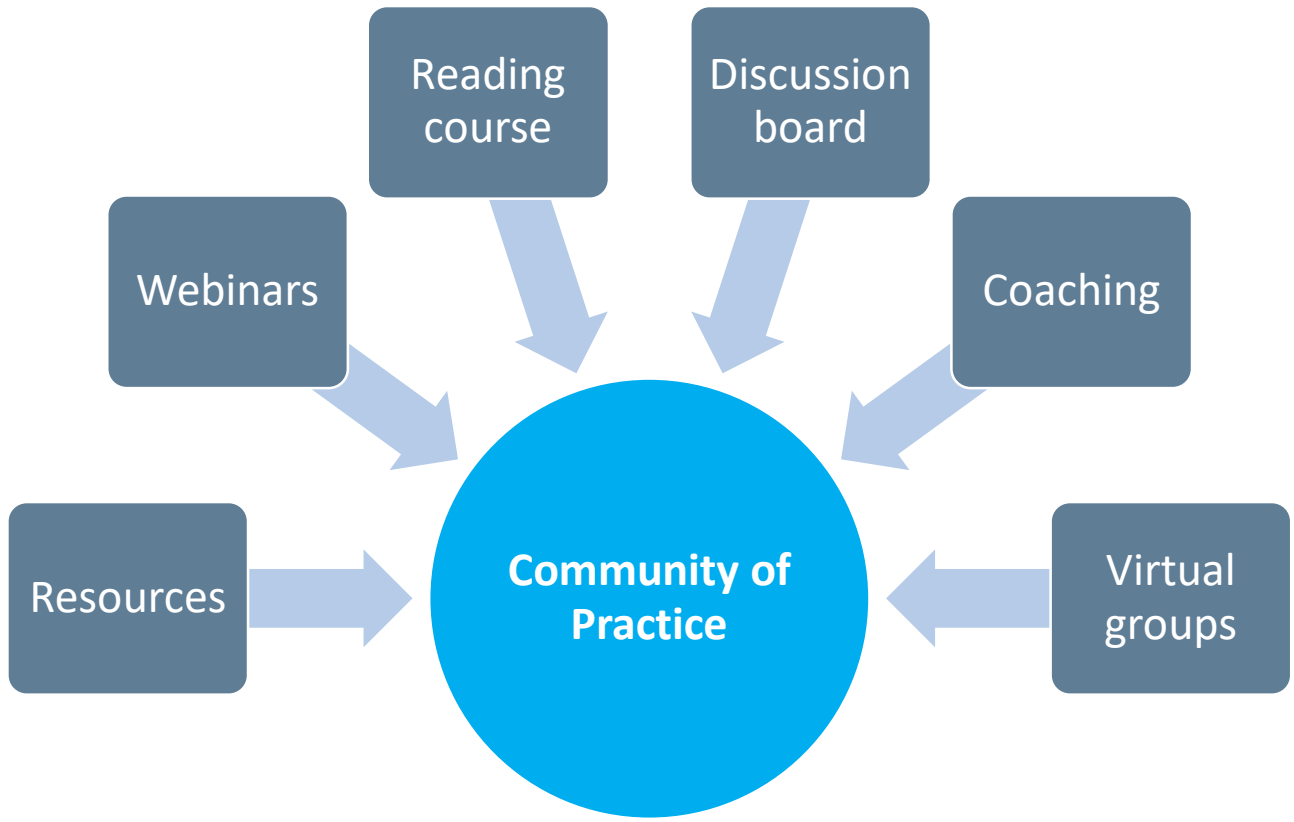
The Center for Prevention Implementation Methodology for **Drug Abuse and HIV (Ce-PIH)**, in collaboration with Third Coast CFAR, conducted a 90-minute "Implementation Science 101" workshop focused on the basics of IS. The training presented an example of how to use IS to support diverse sexual transmitted infection clinics around the country in delivering PrEP to prevent spread of HIV infections.

Implementation Science
 An Introductory Workshop for
 Researchers, Clinicians, Policy
 Makers and Community Members

PSMG: Implementation Research in HIV/AIDS: A Scoping Review of Methodological and Intervention Characteristics

LANDSCAPE OF FUNDED IMPLEMENTATION RESEARCH IN HIV/AIDS

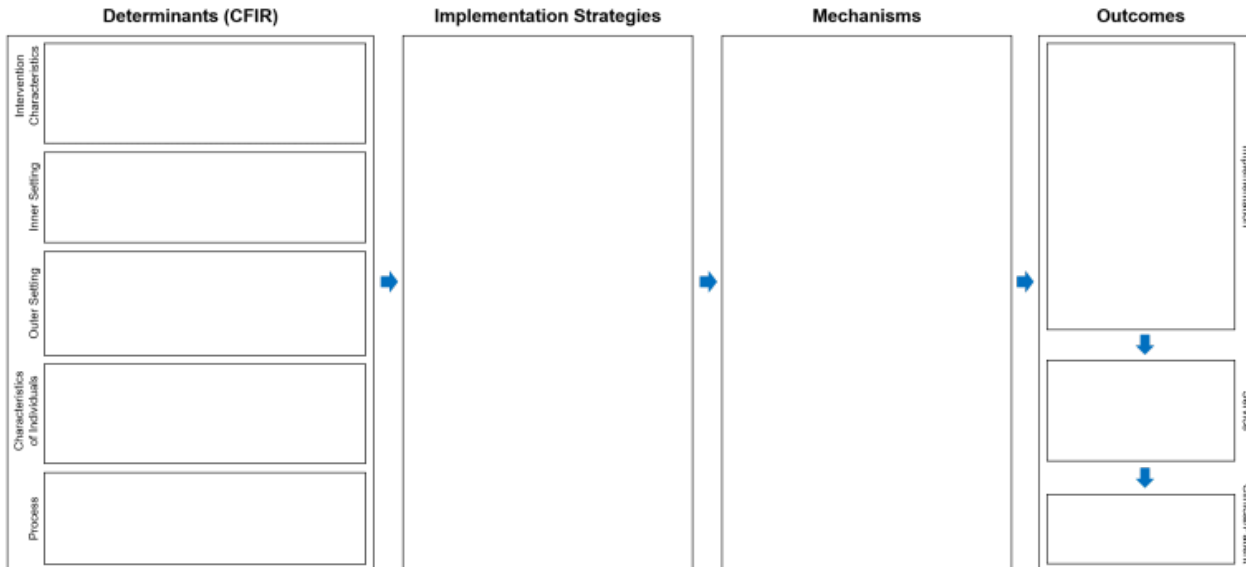
JD Smith and Nanette Benbow present a scoping review of funded implementation research in HIV/AIDS.



<https://isc3i.isgmh.northwestern.edu/>

Implementation Research Logic Model

Logic Model for Implementation Research



Smith, Li, & Rafferty, 2020, <https://doi.org/10.1101/2020.04.05.20054379>
<https://isc3i.isgmh.northwestern.edu/irlm/>

ISC³ Implementation Science Coordination, Consultation, & Collaboration Initiative

ABOUT OUR COMMUNITY RESOURCE HUB **IR LOGIC MODEL** LOGIN

IMPLEMENTATION RESEARCH LOGIC MODEL

The Implementation Research Logic Model (IRLM) is an organizing tool developed to improve the specification, rigor, reproducibility, and transparency of implementation research projects of various study designs and at various stages of research. The IRLM is a required component of the FY2020 1- and 2-year Ending the HIV Epidemic ARC/CFAR supplement announcement. To assist you in developing an IRLM for your project, we've curated a number of tools and resources here.

TEMPLATES AND GUIDES:

TEMPLATES

- > [Fillable PDF](#) (standard format)
- > [Blank PPTs](#) (various formats; updated 4/15/2020)

WORKSHEETS

- > [IRLM Guide and Example](#) (updated 3/27/20)
- > [IRLM Worksheet - Outcomes](#) (updated 3/30/20)
- > [IRLM Worksheet - Determinants](#) (updated 3/30/20)
- > [IRLM Worksheet - Strategies](#) (updated 3/30/20)

Logic Model for Implementation Research

Y1 Technical Assistance Metrics

Community of Practice	<ul style="list-style-type: none">• 344 non-internal (i.e., not ISC³I staff) users• 357 unique visits per month (in 8.5-month lifespan)
Coaching	<ul style="list-style-type: none">• 7 coaches – 3 internal, 4 external• 34 sessions with 25 project teams• Most covered topics:<ul style="list-style-type: none">• implementation research logic model (79% of sessions)• study designs (71% of sessions)• implementation strategies (68% of sessions)• 95% rated “very helpful” (5) on a 5-point scale
Webinars	<ul style="list-style-type: none">• 5 webinars:<ul style="list-style-type: none">• academic–community partnerships• federally qualified health centers• implementation research logic model• study designs• implementation strategies• Live attendance = 16–70 participants
Virtual Groups	<ul style="list-style-type: none">• 6 groups of 11–12 projects x 4 sessions per group• 87 unique participants (average attendance = 7)• 47 projects participated in at least one meeting

Year 2 Context

- Fewer, more diversified projects
 - **12** 2-year projects (selected from Year 1 cohort)
 - **22** 1-year projects: **7** targeting cisgender, heterosexual women for PrEP; **6** for data-driven communication strategies; **9** team-initiated IR
 - **14** researchers new to ISC3I; **20** participated last year
 - All have IRLMs in hand at launch (developing was big focus of year 1)
- New structure
 - **1** national coordinating center (ISC³I) and **5** regional hubs
 - Opportunity for more in-depth and specialized consultation
- ISC³I able to shift to greater focus on coordination
 - Harmonization of measures and creation of decision-making tools
 - Identification of best practices
 - Training and support for IS tailored to implementation partners



Implementation Science Consultation Hubs



Mid-Atlantic CFAR Consortium Plus

Directors: Sheree Schwartz and Stefan Baral



Rigorous, Rapid & Relevant Evidence
Adaptation and Implementation to EHE

Director: Donna Spiegelman



San Diego IS Hub

Directors: Borsika Rabin and Nicole Stadnick



UAB CFAR EHE IS Hub

Directors: Michael Mugavero and Robin Lanzi



UCLA Rapid, Relevant and Rigorous (3R) IS Hub

Director: Alison Hamilton

Activities for Year 2

ISC3I

- Coordinate Data Collection/Progress Reporting
- Maintain Online Community of Practice and Biweekly Newsletter
- Host national HIV IS Webinar Series
- Conduct systematic Reviews to inform field and begin creating decision-support tools
 - Topics: Barriers/facilitators, Implementation strategies for HIV
- Criterion-based review of best practices
- Guest edit *JAIDS* supplement
- Host “Fishbowl” feedback groups by topic area
- Develop trainings in IS tailored to needs of implementation partners
- Provide ongoing coaching with year 1 projects
- Support executive committee

The Hubs

- Assigned 6-7 projects based on both project and hub preference
- Offer tailored consultations to projects throughout the year
- Assist projects with progress reporting and implementation of decision-support tools
- Host webinars and/or meetings with assigned projects
- Contribute to global planning through the ISC3I Executive Committee
- Contribute to creation and refinement of decision-support tools

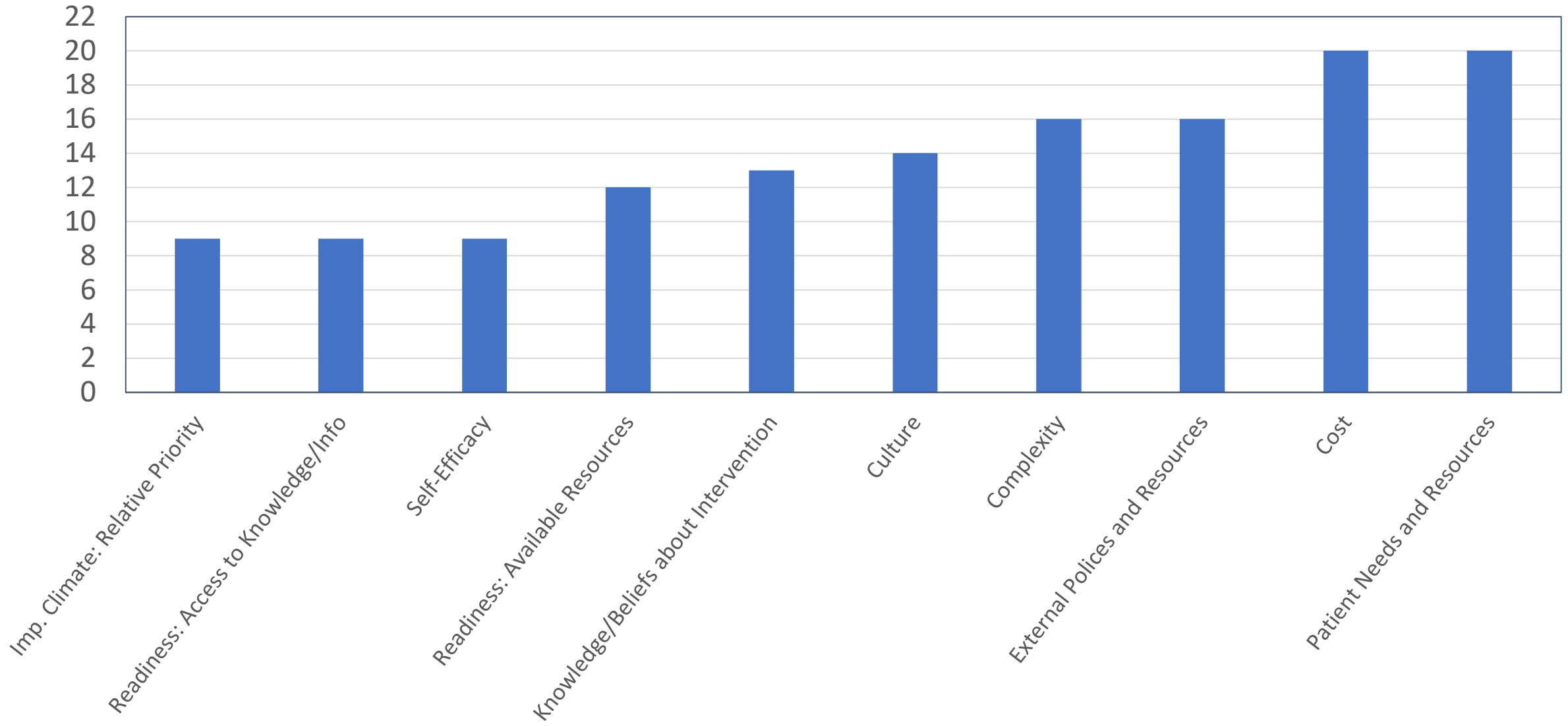


Findings from Year 1

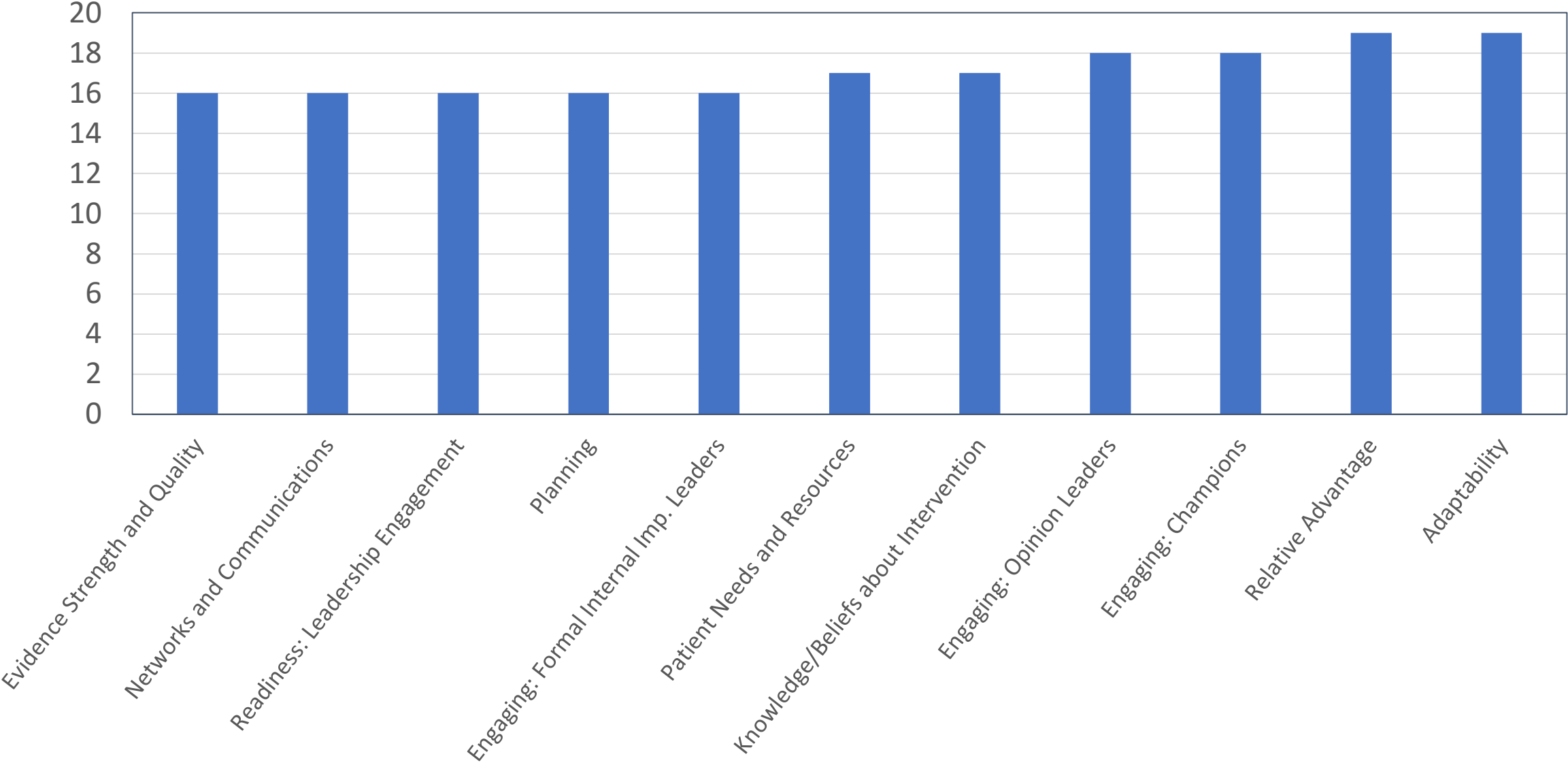
- Many projects were in the exploration phase and focused on identifying barriers and facilitators
- Most awardees were HIV researchers, but few reported having formal implementation science training
- Impact of COVID-19
 - Delivery of technical assistance (already virtual) not impacted by COVID-19
 - Projects reported COVID-19 related delays, but most were able to achieve at least some of their aims
 - Activities delayed by COVID: Participant recruitment/enrollment and collaboration with implementation partners
- Project teams would have benefitted from thinking about outcomes (where they are going) and/or strategies (what they are testing) early on
- Preliminary analysis suggests that engagement with ISC3I activities was associated with a greater chance of getting funded in Year 2
- Developed many resources for the Community of Practice and are available publically in the “Resource Hub” - <https://isc3i.isgmh.northwestern.edu/resource-hub/>



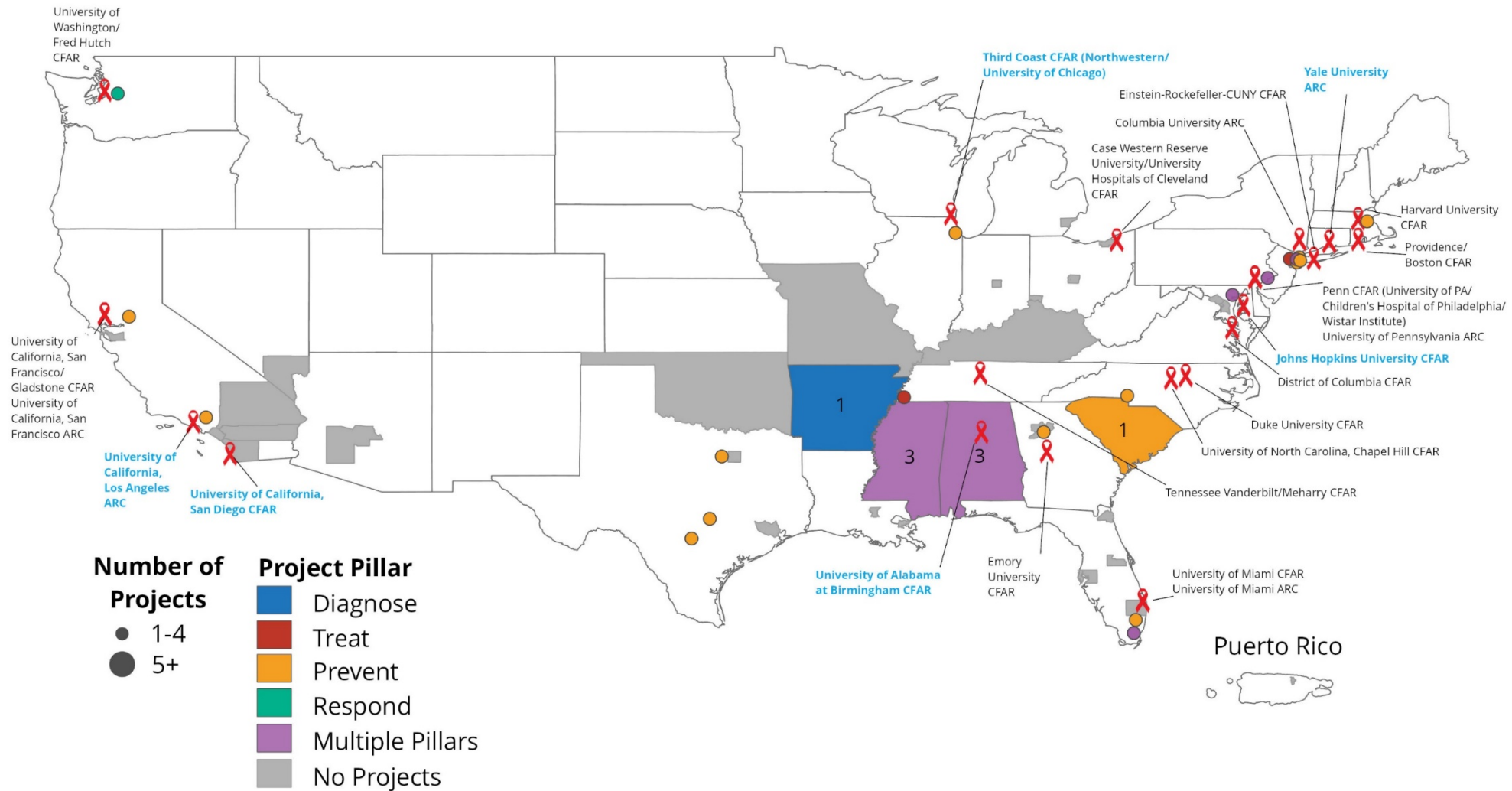
Most Common Barriers Identified in Y1 projects (n=45)



Most Common Facilitators Identified in Y1 (n=45)



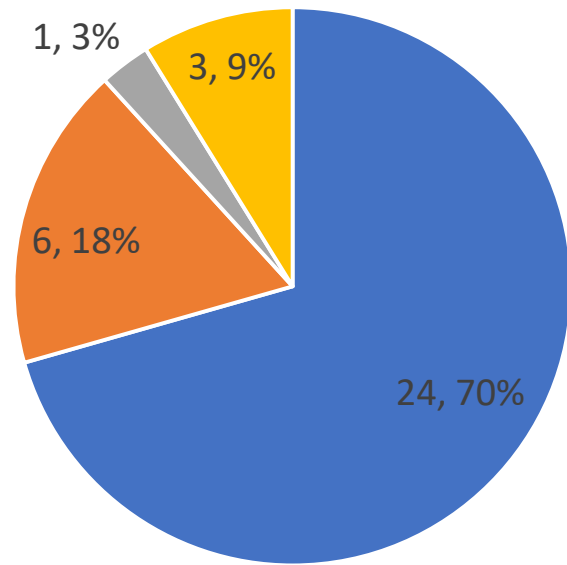
Year 2 Ending the HIV Epidemic CFAR/ARC Projects (N=34)



*CFARs/ARCs with an affiliated IS Hub are marked with blue text

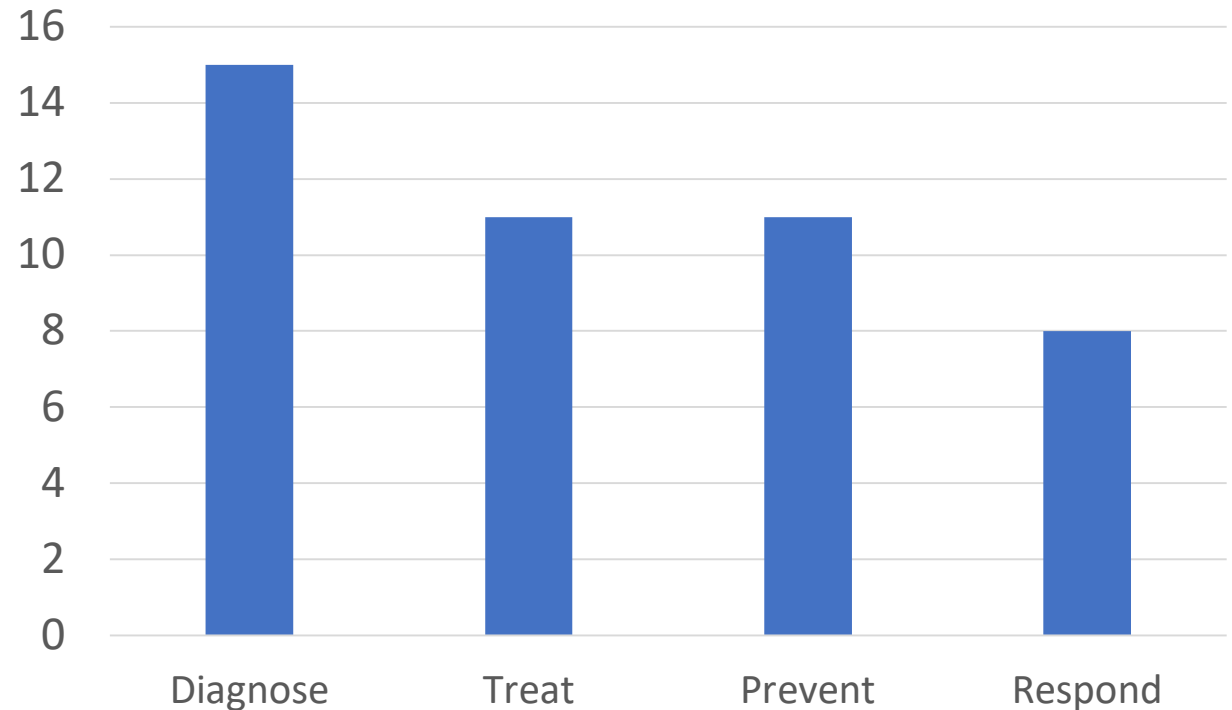
Pillars* Addressed by Ending the HIV Epidemic CFAR/ARC Planning Projects

Which of the EHE pillars does your supplement project primarily address?



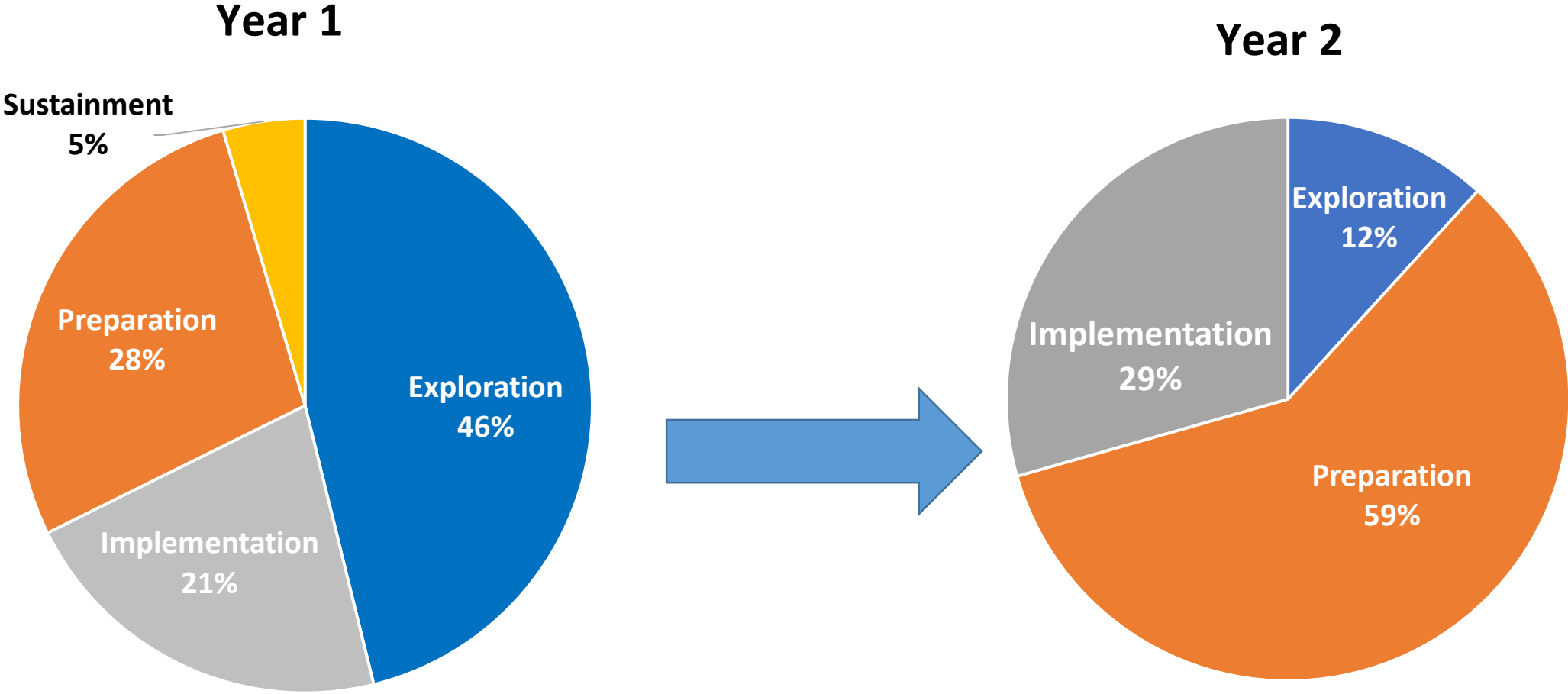
■ Prevent ■ Treat ■ Respond ■ Diagnose

Which other EHE pillars does your supplement project secondarily address?

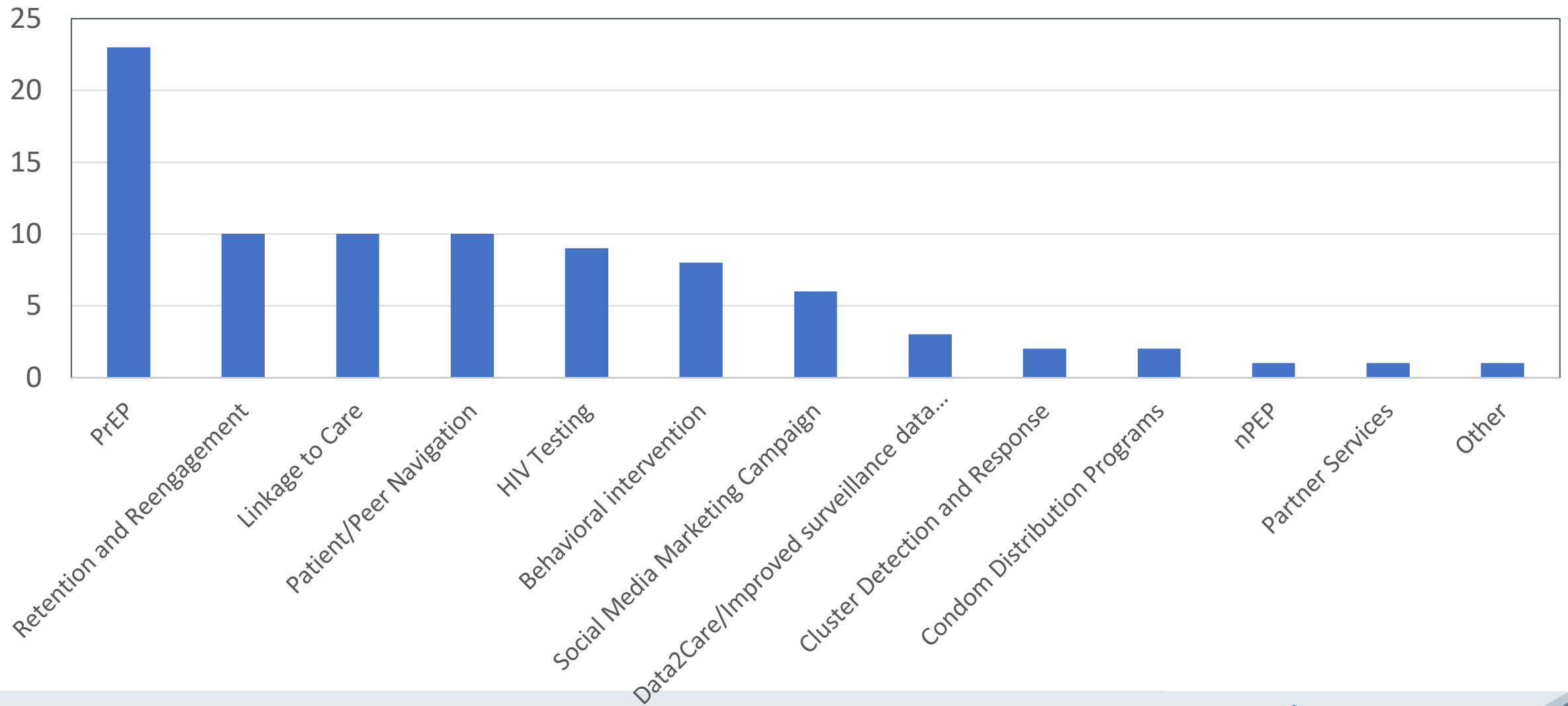


*Planning projects might have selected more than one pillar focus

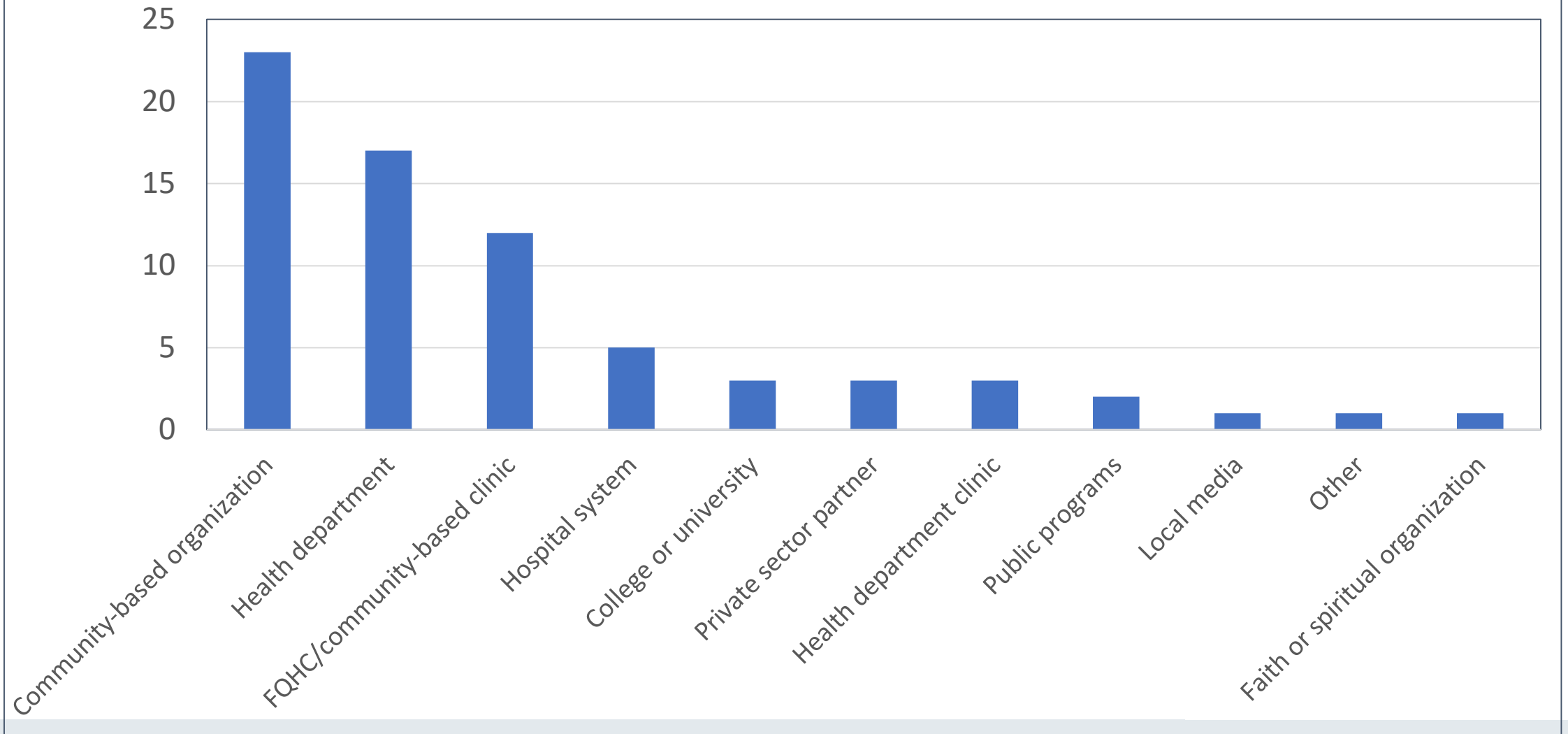
What stage of implementation (as defined by EPIS model) is the intervention?



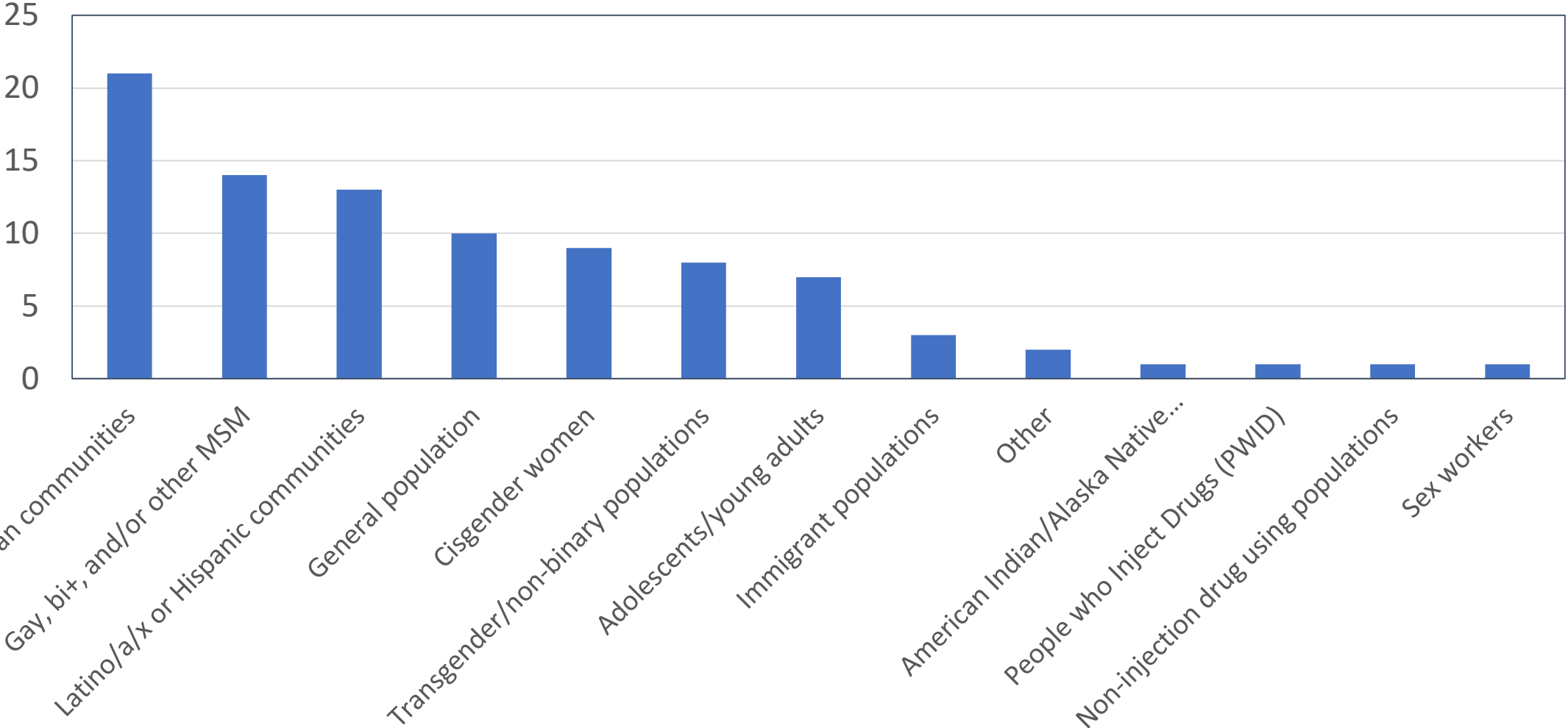
What is (are) the clinical or prevention intervention(s) (i.e., program, pill, practice) that you are trying to implement in your EHE supplement?



What type of organization is (are) your implementation partners(s)?



Does your EHE supplement specifically target any of the following HIV priority populations?

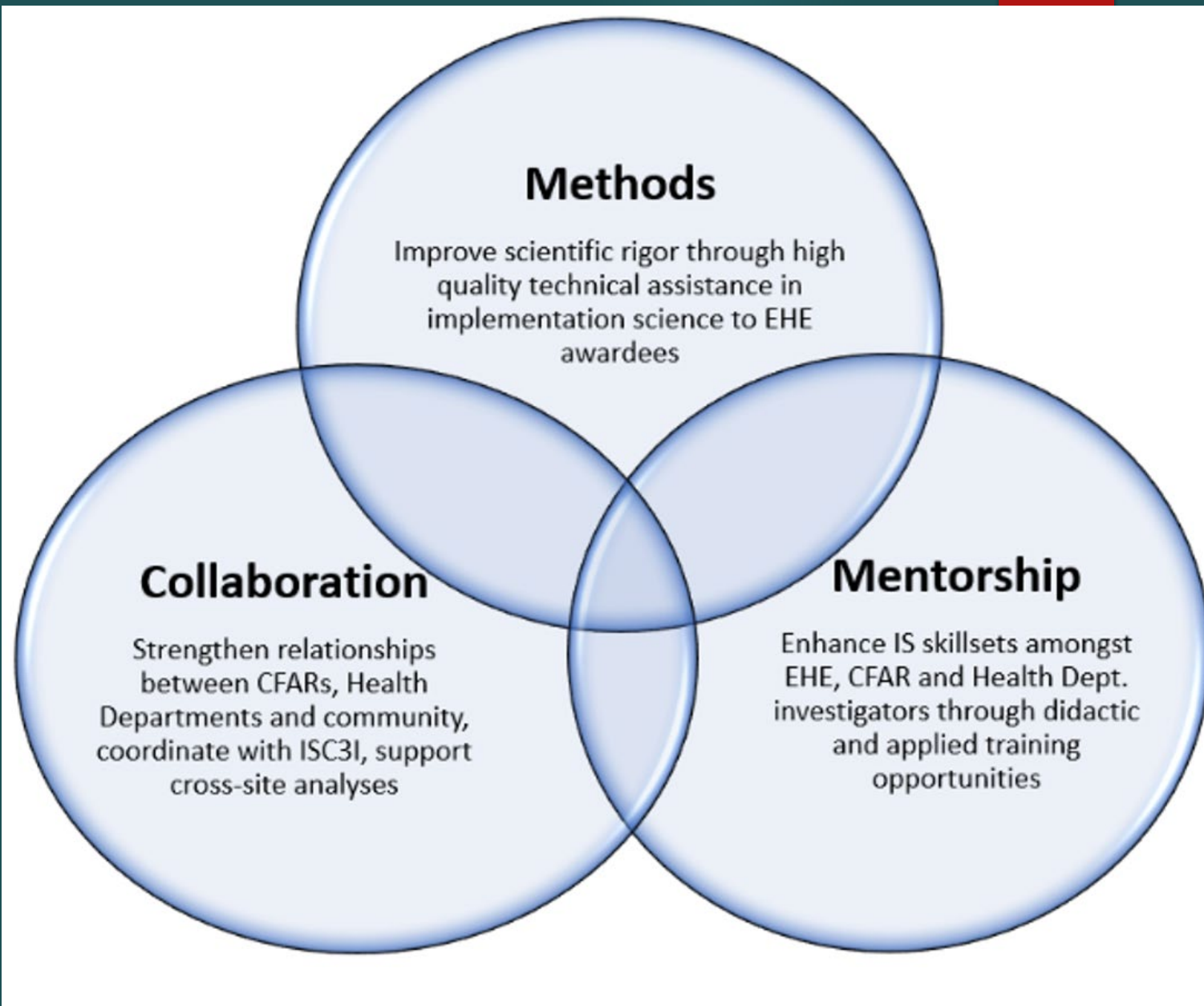


Mid-Atlantic CFAR Consortium Plus (MACC+) IS Hub

- ▶ **Johns Hopkins University CFAR Investigators**
 - ▶ Co-Project Directors – Schwartz & Baral
 - ▶ Co-Is – Hoffmann, Beres, Hansoti, Owczarzak
- ▶ **Collaborating CFARs – DC CFAR, Penn**
- ▶ **Center for Dissemination & Implementation**
(Elvin Geng)
- ▶ Patrick Sullivan (Emory)
- ▶ Inter-CFAR Fellowship Alumni



MACC+ Hub Approach



EXPERTISE

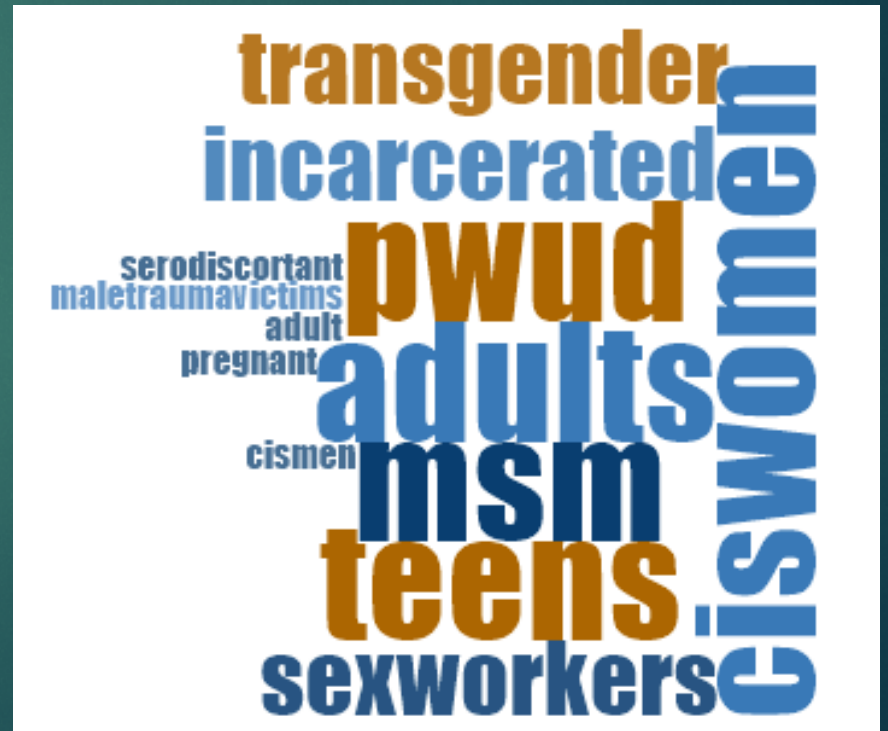
Designs



Frameworks



Populations



Our services

- ▶ Coaching related to your project
- ▶ Review and feedback of tools, frameworks and questions pertaining to ongoing grants
- ▶ Support for new grant development
- ▶ Support for coordination of outcomes & cross-site knowledge generation
- ▶ Didactic and/or applied case study webinars, discussion of new or underutilized IS methods and frameworks

Consultations can be booked online via Acuity

<https://app.acuityscheduling.com/schedule.php?owner=21260576>

R3EDI - Rigorous, Rapid, & Relevant Evidence aDaptation & Implementation to EHE

Core team

Project Director Donna Spiegelman, ScD*



Implementation
Science analyst: Raul
Hernandez-Ramirez



Quantitative
analyst: Debbie
Humphries



Qualitative
analyst:
Christine Simon



Program
Administrator:
William Tootle



Yale SCHOOL OF PUBLIC HEALTH

*Director of CIRA's Interdisciplinary Research Methods Core;
Director of the Center for Methods in Implementation and
Prevention Science (CMIPS)

Additional R3EDI Team Members



Yale SCHOOL OF PUBLIC HEALTH

Co-investigators- Yale Faculty and Affiliates:



Former CIRA PI
Paul Cleary, PhD



CIRA PI Trace
Kershaw, PhD



Dean Sten
Vermund, MD,
PhD



Steve Bernstein,
MD



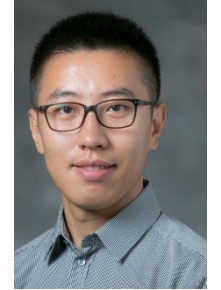
Luke Davis, MD,
MS



Laure Forastiere,
PhD



Ashley Hagaman,
PhD



Fan Li, PhD



Marcella Nunez-
Smith, MD, MHS



Elizabeth
Rhodes, PhD
(Postdoc)



Xin Zhou, PhD



CIRA Daniel
Davidson

• Consultants:



Brian Mittman,
PhD (Kaiser
Permanente)



Inbal Nahum-Shani,
PhD (University of
Michigan)



Rachel Nugent, PhD
(RTI International)

R3EDI - Rigorous, Rapid, & Relevant Evidence aDaptation & Implementation to EHE



Yale SCHOOL OF PUBLIC HEALTH

- Aims/plans

Provide technical assistance, coaching, training, and consultative services to EHE project teams and collaborate with the EHE coordinating center, creating opportunities to generate generalizable knowledge. *Hands-on technical assistance is available and welcomed.*

- Areas of expertise

- IS methods, frameworks, strategies, measures and outcomes in HIV/AIDS research
- Design and management of experimental and observational studies
- Quantitative, qualitative, and mixed-methods analytic approaches for sampling and data collection and analysis; and economic analysis
- Partnership formation and community-based participatory research

- Potential contributions to EHE and/or IS

Publications advancing methodological areas as well as highlighting common gaps/challenges of served EHE projects, with recommendations for addressing them; new grants to assess scale-up, sustainability, and adaptation to new contexts

SD CFAR IS HUB

ISC³I Executive Committee Meeting
September 9, 2020



Team Introductions

IS Coaches

Borsika Rabin, PhD, MPH, PharmD
Project Director, Senior IS Coach, ISC³I EC Rep



Nicole Stadnick, PhD, MPH
Project Director, Senior IS Coach, ISC³I EC Rep



Gregory Aarons, PhD
Senior IS Coach



Lauren Brookman-Fraze, PhD
Senior IS Coach



Jessica Montoya, PhD
Assistant IS Coach

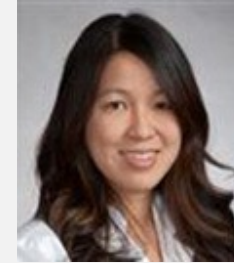


Clare Viglione, MPH, RD
Hub Manager, Shared Measures Manager, Assistant IS Coach



HIV Coaches

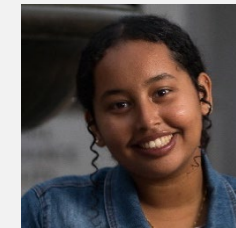
Maile Karris, MD, MPH
HIV Science Coach



Laramie Smith, PhD
HIV Science Coach



Yordanos Tesfai
Assistant Hub Coordinator, Assistant Shared Measures Manager

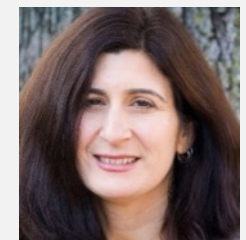


IS+HIV Consultants

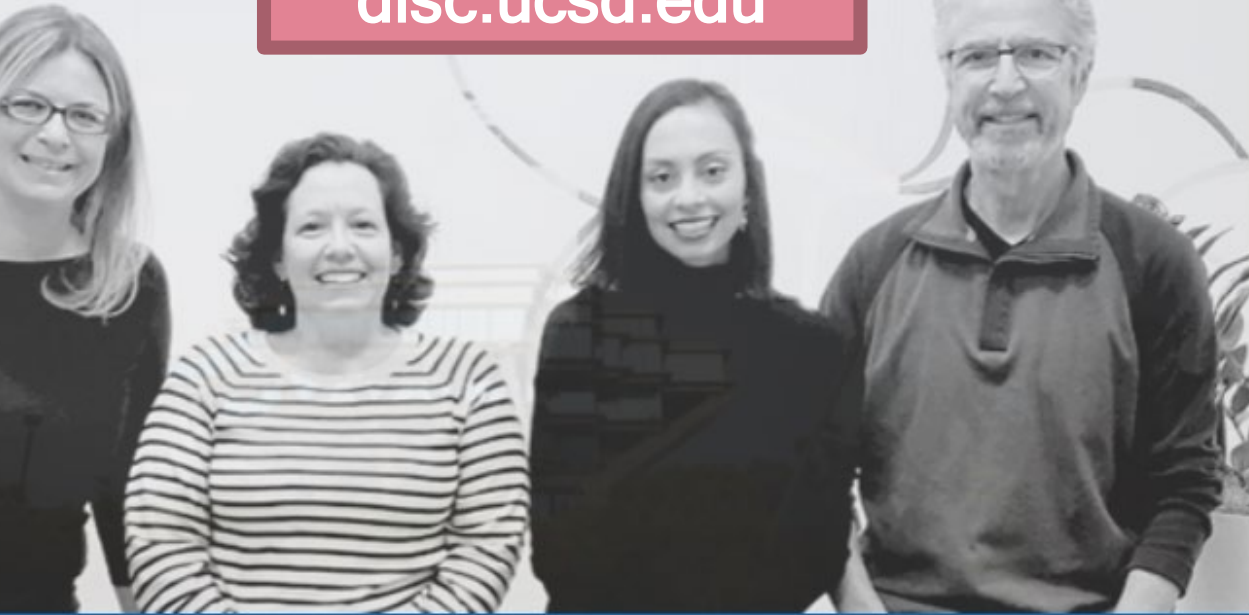
Cathleen Willging, PhD
Expert IS Consultant



Sylvie Naar, PhD
Expert IS Consultant



disc.ucsd.edu



Activities

Research Advancement

Applications, grants, and opportunities
for research and career advancement.

News & Events

Job Announcements:

Applications are invited for a **Postdoctoral
Fellowship** position in implementation science with
Dr. [Name] at the [Institution].

cfar.ucsd.edu



IS Expertise

- Application of IS frameworks (e.g., RE-AIM/PRISM, EPIS)
- Development of multi-level IS strategies & pragmatic measures
- EBP implementation in behavioral health domestically and globally
- Development and sustainment of community academic partnerships to support implementation and sustainment
- Advancing measurement and evaluation of adaptations, core components and tailoring for context

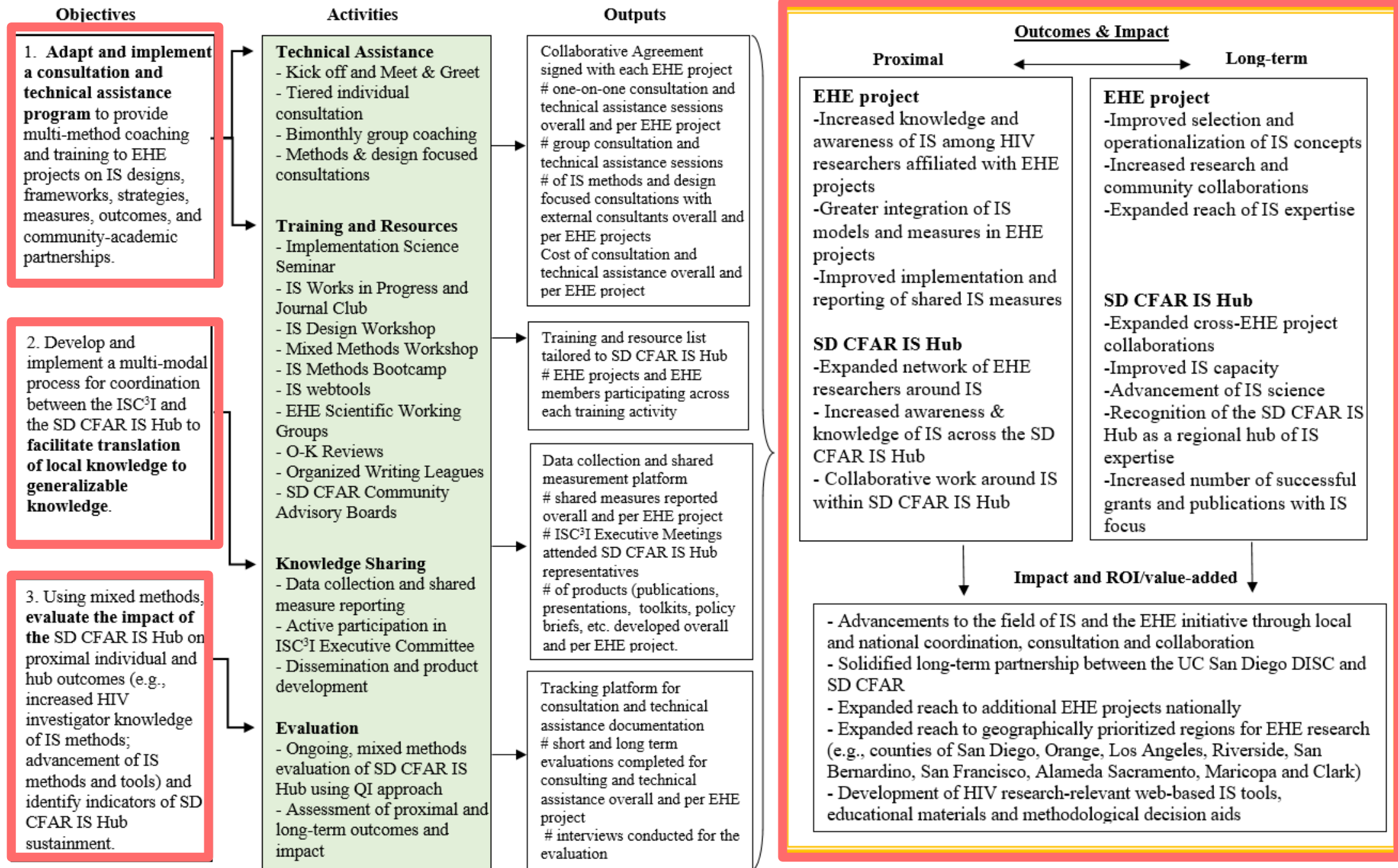
IS & HIV

-Expertise in designing, adapting & implementing multi-site studies of complex, multilevel HIV interventions especially with paraprofessionals
--Expertise in mixed-methods approaches to understand impacts of programs & policies in HIV

HIV Expertise

- Collaborative qualitative, quantitative, and mixed-methods research in HIV intervention development, evaluation
- Implementation of HIV prevention & treatment programs, especially with vulnerable and diverse populations
- Clinical HIV and infectious disease expertise
- Translational HIV research
- Development of partnerships with community stakeholders and HIV practitioners

SD CFAR IS Consultation Hub Logic Model



UAB CFAR Implementation Science Hub



Michael Mugavero, MD,
MHS (MPI)
SOM
UAB CFAR Co-Director &
Clinical Core Director



Alfredo Guzman, MEng
SOM
Database & Informatics
Director



Tom Creger, PhD
Program
Evaluation



Robin Lanzi, PhD, MPH
(MPI)
SOPH
UAB CFAR Behavioral &
Community Sciences Core
Co-Director



Dustin Long, PhD
SOPH
UAB CFAR Clinical Core
Co-Director:
Biostatistics



Kaylee Burgan,
MA
Program
Evaluation



Aadia Rana, MD
SOM
UAB CFAR Ending HIV
in Alabama SWG Co-
Director



Bertha Hidalgo, PhD
SOPH
&
Larry Hearld, PhD
SHP
D&I Science



Claire Estep, MA
Qualitative &
Mixed Methods
Research



Greer Burkholder, MD,
MSPH
SOM
UAB CFAR Clinical Core
Co-Director: Database &
Informatics



Edward Jackson
&
Kalani Upshaw
Community
Engagement



Samantha
Whitfield, MPH
Project
Coordinator

UAB CFAR Implementation Science Hub

- Interface with Inter-CFAR working groups
 - HIV in the South, Faith & Spirituality & CNICS
- Multi-site coaching, consultation, collaboration with RW HIV Clinics
 - Client-level data collation and evaluation of care continuum outcomes
- Multi-site collaboration with public health / eHARS data
 - Road to Zero R01 (Rana PI)
- Community engaged science and partnership formation
 - Local, statewide, regional and national networks
- Program evaluation and IS frameworks, measures & methods
 - Support for awardees with specific teams assigned based on areas of need, content, and expertise

Next Steps

- Establish consulting team for each project
 - Team of 3 – 4 UAB Hub members for each grantee
- Quarterly all-site meetings
 - February, May, August
- Coordination with ISC³I and other grantees
 - Shared measures, group consultation(s) to streamline resources
- Shared folder for grantee aims and other supplemental materials
 - OneDrive or SharePoint



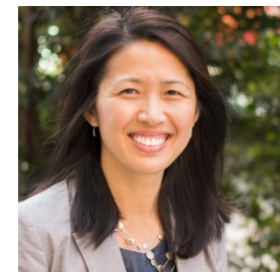
UCLA Rapid, Rigorous, Relevant (3R) Implementation Science Hub Overview



CFAR Webinar
January 25, 2021

The UCLA 3R Hub Team

- CHIPTS/ARC PI: Steve Shoptaw, PhD
- Hub PI: Alison Hamilton, PhD, MPH
- Hub Co-Is: Norweeta Milburn, PhD, Chunqing Lin, PhD, Sung-Jae Lee, PhD
- Hub Consultants: Ana Baumann, PhD, Matthew Chinman, PhD, Geoff Curran, PhD, Erin Finley, PhD, Russ Glasgow, PhD
- Hub Project Directors: Elena Rosenberg-Carlson, MPH, & Uyen Kao, MPH



UCLA 3R Awardees

Project Director, Site	Project
Ronald Brooks, UCLA CHIPTS	Telehealth to optimize PrEP care continuum outcomes among cisgender Black and Latina heterosexual women
Larry Brown, Providence/Boston CFAR	Exploring PrEP implementation strategies tailored for African American cisgender women living in Mississippi
Susanne Doblecki-Lewis, Miami CFAR	Adaptation of the mobile PrEP implementation strategy for equitable scale-out
Latesha Eloppe, UAB CFAR	PrOTEC AL: PrEP optimization through enhanced continuum tracking
Roxanne Kerani, UW CFAR	Data driven messaging to increase engagement in molecular cluster investigations
Kim Koester, UCSF CAPS	Connecting resources for rural and urban sexual health: CRRUSH-Sacramento
Bisola Ojikutu, Harvard CFAR	Addressing unmet PrEP needs among diverse Black women

UCLA 3R Hub Aims

- Provide implementation science training and ongoing coaching and technical assistance to EHE grantees, with a focus on cutting-edge 3R methods, strategies, models, theories, and frameworks
- Accelerate HIV research impacts by interfacing with and contributing to the EHE Coordinating Center and identifying resources and opportunities for advancing evidence-based interventions through the implementation pipeline
- Provide and promote a platform for multidisciplinary collaborations in support of HIV-related implementation research

UCLA 3R Hub Core Activities

For EHE awardees:

- Tailored, modular IS training
- Consultation, coaching, and technical assistance
- Expert roundtable feedback focused on aims, manuscript drafts
- Lecture series (Beachside Chats w/consultants)
- Resources and opportunities

Within the hub and across hubs:

- Evaluation
- Collaboration, e.g., with UCSD Hub
- Contributions to ISC³I

Thank You!

For more information, please contact :

ucla3rhub@mednet.ucla.edu

Any questions?

- 1) Type your questions into the Q&A Box for the moderators to read.
- 2) Request to the Host to be unmuted.

